

Humanized KDR Mouse

Strain Name: C57BL/6-*Kdr*^{tm2(hKDR)Smoc}

Strain Background: C57BL/6

Cat. No. : IT-HU-00098

Validation data

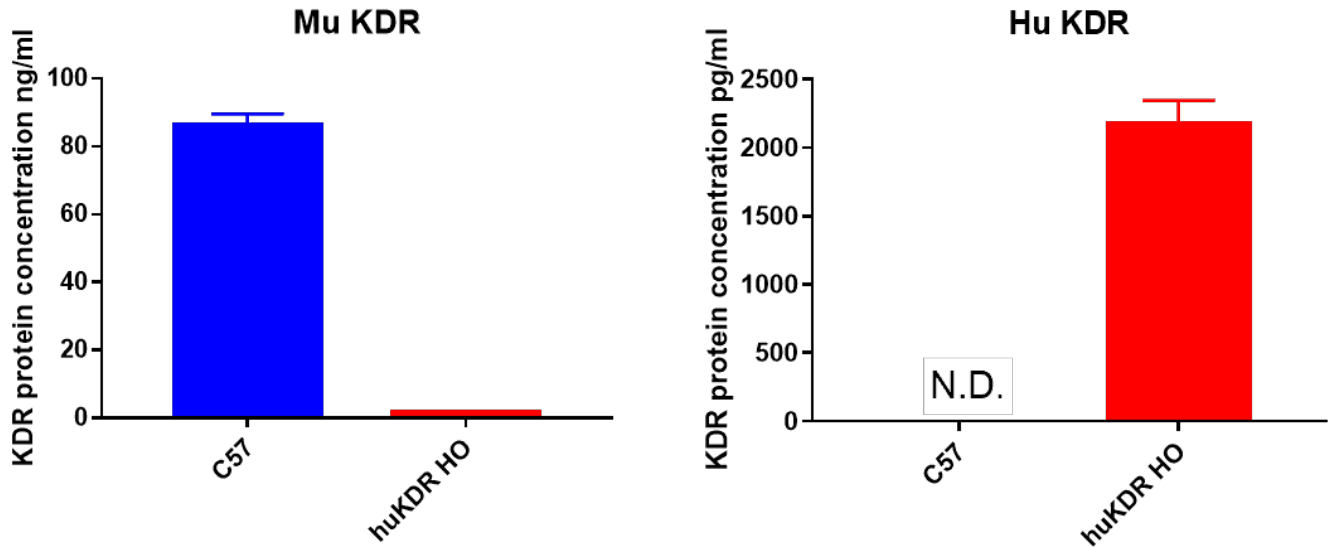


Figure 1. Expression of mouse KDR and human KDR in C57BL/6 wild type mice and KDR-HU homozygous mice.

MC38

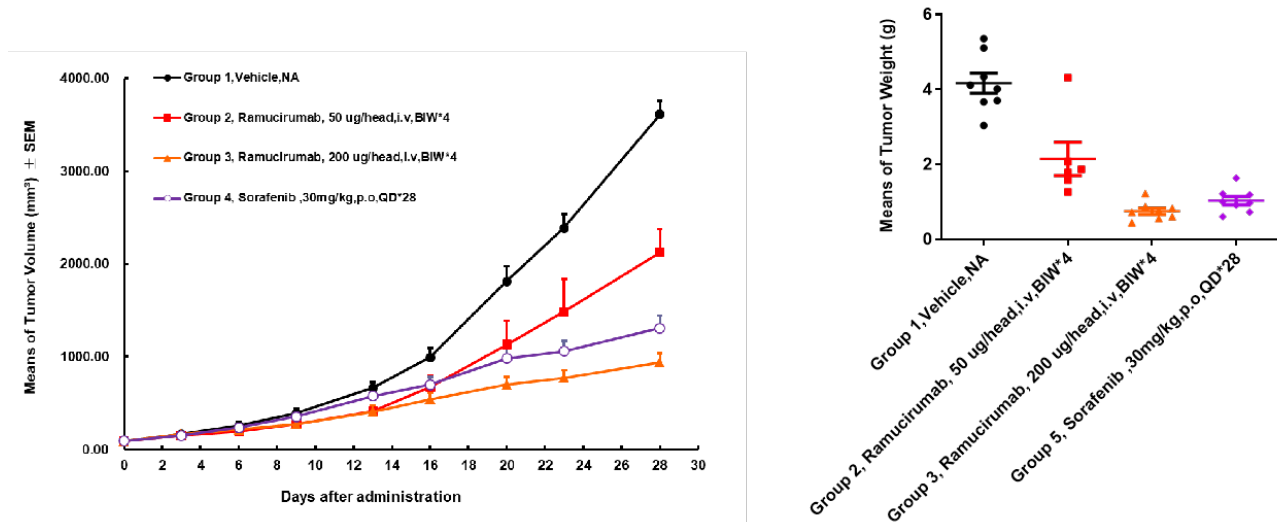


Figure 2. In vivo validation of anti-tumor efficacy in a B16F1 tumor-bearing model of humanized KDR mice. The results showed: The drugs targeting human KDR were associated with a very significant anti-tumor, demonstrating that the humanized KDR mice are a good in vivo model for validating the efficacy of drugs targeting human KDR.

B16F1

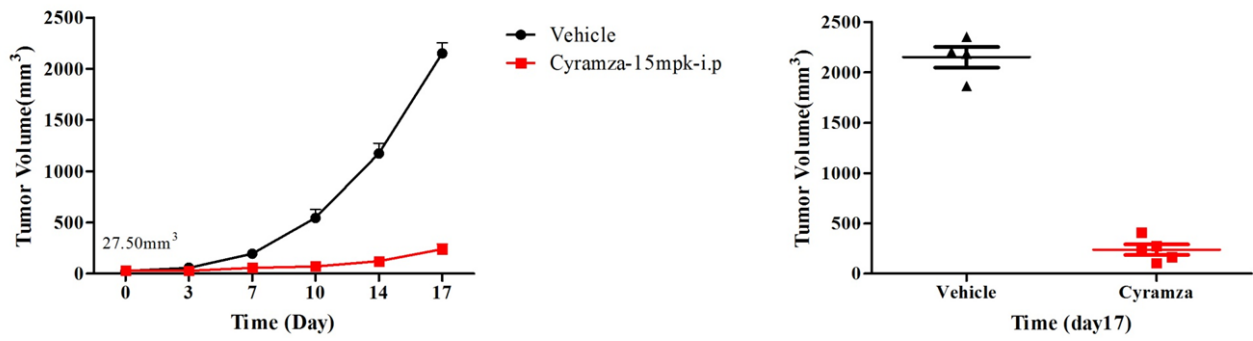


Figure 3. In vivo validation of anti-tumor efficacy in a MC38 tumor-bearing model of humanized KDR mice. The results showed: The drugs targeting human KDR were associated with a very significant anti-tumor.

Immune Checkpoint Humanized Mouse Models

Being recognized as a top scientific breakthrough in 2013, cancer immunotherapy is predicted to be one of the most promising research areas for improving patient outcomes. Although many immunotherapy breakthroughs may still lie ahead, important clinical advances have been made in the past few years for some of the deadliest cancers, reaffirming the potential of immunotherapy for many types of patients.

However, it is worth noting that drug candidates developed to interfere with human proteins may not comparably interact with their murine counterparts. It is therefore critical to develop humanized mouse models to enable in vivo efficacy evaluation of cancer immunotherapies.

Immune Checkpoint Humanized Mouse Models available at ingenious targeting laboratory

<i>4-1BB</i>	<i>PD-1/PD-L1</i>
<i>CD40</i>	<i>PD-1/TIGIT</i>
<i>CD47</i>	<i>PD-1/TIM3</i>
<i>CD73 (NT5E)</i>	<i>PD-L1</i>
<i>CTLA4 (C57BL/6)</i>	<i>PD-L1/CTLA4</i>
<i>CTLA4 (BALB/c)</i>	<i>PD-L1/LAG3</i>
<i>KDR</i>	<i>PD-L1/OX40</i>
<i>LAG3</i>	<i>PD-L1/TIGIT</i>
<i>OX40</i>	<i>SIRPA</i>
<i>OX40/CTLA4</i>	<i>SIRPA/CD47</i>
<i>PD-1 (C57BL/6)</i>	<i>TIGIT</i>
<i>PD-1 (BALB/c)</i>	<i>TIM3 (C57BL/6)</i>
<i>PD-1/4-1BB</i>	<i>TIM3 (BALB/c)</i>
<i>PD-1/CD40</i>	<i>TNFRSF1B</i>
<i>PD-1/CTLA4</i>	<i>And more to come!</i>
<i>PD-1/LAG3</i>	
<i>PD-1/OX40</i>	

To get to know more about these models, visit our website www.genetargeting.com
or contact our scientific experts at inquiry@genetargeting.com

About ingenious targeting laboratory

ingenious targeting laboratory (**ingenious**) has been a leading global provider of custom genetically modified mouse, rat, and rabbit models for over 20 years. As one of the very first mouse gene targeting companies, our trusted service is built on two decades' worth of successful animal model creation for investigators, organizations, and companies worldwide. Our models have been published in hundreds of journals including *Science*, *Nature*, and *Cell*, making us one of the most validated and respected production companies in the industry. We are excited to add catalog mouse models to our service repertoire by means of our collaboration with Shanghai Model Organisms Center (SMOC).

ingenious targeting laboratory

2200 Smithtown Ave, Ronkonkoma, NY 11779
www.genetargeting.com • inquiry@genetargeting.com