

Double Humanized PD-L1&LAG3-HU Mouse

Strain Name: C57BL/6-*Cd274^{em1(hPD-L1)Lag3tm1(hLAG3)/Smoc}*

Strain Background: C57BL/6

Cat. No. : IT-HU-00137

Validation data

Description

This PD-L1 and LAG3 double knockin strain is established by crossing PD-L1-HU and LAG3-HU mice together. These double double knockin mouse models can be useful for evaluating the efficacy of potential immunotherapy drug combinations.

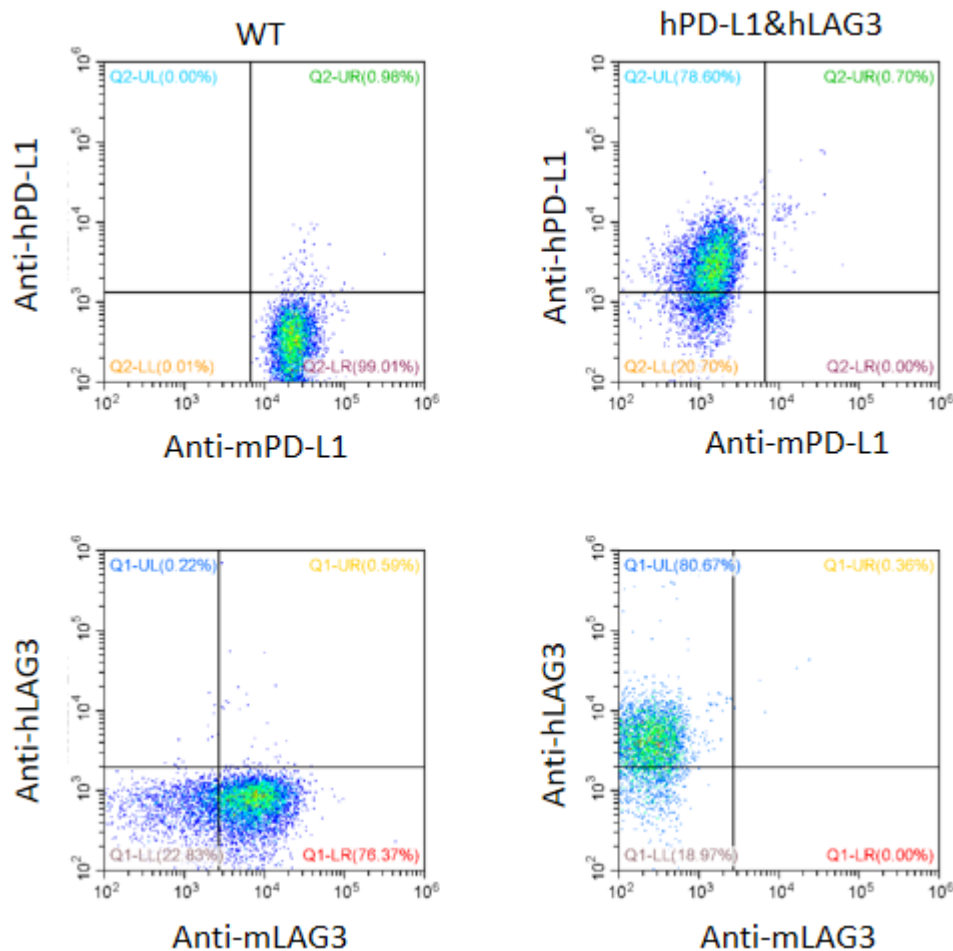


Figure 1. Splenocytes from homozygous hPDL1/hLAG3 mice were analyzed by flow cytometry after activation. mPDL1⁺ and mLAG3⁺ were detectable in wild type (WT) C57BL/6, while hPDL1⁺ and hLAG3⁺ cells were detectable in the homozygous hLAG3/h4-1BB mice.

Immune Checkpoint Humanized Mouse Models

Being recognized as a top scientific breakthrough in 2013, cancer immunotherapy is predicted to be one of the most promising research areas for improving patient outcomes. Although many immunotherapy breakthroughs may still lie ahead, important clinical advances have been made in the past few years for some of the deadliest cancers, reaffirming the potential of immunotherapy for many types of patients.

However, it is worth noting that drug candidates developed to interfere with human proteins may not comparably interact with their murine counterparts. It is therefore critical to develop humanized mouse models to enable in vivo efficacy evaluation of cancer immunotherapies.

Immune Checkpoint Humanized Mouse Models available at ingenious targeting laboratory

<i>4-1BB</i>	<i>PD-1/PD-L1</i>
<i>CD40</i>	<i>PD-1/TIGIT</i>
<i>CD47</i>	<i>PD-1/TIM3</i>
<i>CD73 (NT5E)</i>	<i>PD-L1</i>
<i>CTLA4 (C57BL/6)</i>	<i>PD-L1/CTLA4</i>
<i>CTLA4 (BALB/c)</i>	<i>PD-L1/LAG3</i>
<i>KDR</i>	<i>PD-L1/OX40</i>
<i>LAG3</i>	<i>PD-L1/TIGIT</i>
<i>OX40</i>	<i>SIRPA</i>
<i>OX40/CTLA4</i>	<i>SIRPA/CD47</i>
<i>PD-1 (C57BL/6)</i>	<i>TIGIT</i>
<i>PD-1 (BALB/c)</i>	<i>TIM3 (C57BL/6)</i>
<i>PD-1/4-1BB</i>	<i>TIM3 (BALB/c)</i>
<i>PD-1/CD40</i>	<i>TNFRSF1B</i>
<i>PD-1/CTLA4</i>	<i>And more to come!</i>
<i>PD-1/LAG3</i>	
<i>PD-1/OX40</i>	

To get to know more about these models, visit our website www.genetargeting.com
or contact our scientific experts at inquiry@genetargeting.com

About ingenious targeting laboratory

ingenious targeting laboratory (**ingenious**) has been a leading global provider of custom genetically modified mouse, rat, and rabbit models for over 20 years. As one of the very first mouse gene targeting companies, our trusted service is built on two decades' worth of successful animal model creation for investigators, organizations, and companies worldwide. Our models have been published in hundreds of journals including *Science*, *Nature*, and *Cell*, making us one of the most validated and respected production companies in the industry. We are excited to add catalog mouse models to our service repertoire by means of our collaboration with Shanghai Model Organisms Center (SMOC).

ingenious targeting laboratory

2200 Smithtown Ave, Ronkonkoma, NY 11779
www.genetargeting.com • inquiry@genetargeting.com